

Diaphragm Valves
Cylindrical Plug Valves
Ball Valves
Sight Glasses
Check Valves
Butterfly Valves
Valve Automation
Sampling Ball Valves
Inline Sampling Valves
Sampling Systems



with corrosion-resistant linings and encapsulations made of PTFE, PTFE-AS, PFA, PFA-AS, PVDF, ETFE, UHMWPE, PP . .

Process Valves

plastomer-lined

for shut-off, flow control and throttling of corrosive, abrasive or even toxic process media in either liquid or gaseous state. Flanges acc. to EN 1092-1 B1 and ASME B16.5 standards.



SDV Diaphragm Valves

Nom. Sizes: DN15 - DN200 resp. 1/2" - 8"
Flanges: DIN PN10/16 resp. ANSI 150lbs
F/F length: EN 558-1 range 1 resp. US standard



SCP Cylindrical Plug Valves

Nom. Sizes: DN15 - DN100 resp. 1/2" - 6" red. port
Flanges: DIN PN10/16 resp. ANSI 150lbs
F/F length: EN 558-1 range 1 resp. ASME B16.10



SBV Ball Valves

Nom. Sizes: DN15 - DN150 resp. 1/2" - 8" red. port
Flanges: DIN PN10/16 resp. ANSI 150lbs
F/F length: EN 558-1 range 1 resp. ASME B16.10



SBP Butterfly Valves, plastomer-lined, Wafer/Lug

Nom. Sizes: DN25 - DN1000 resp. 1" - 42"
Flanges: DIN PN10/16 resp. ANSI 150lbs
F/F length: EN 558-1 range 20 resp. ASME B16.10



SBE Butterfly Valves, elastomer-lined, Wafer/Lug

Nom. Sizes: DN40 - DN800 resp. 1 1/2" - 32"
Flanges: DIN PN10/16 resp. ANSI 150lbs
F/F length: EN 558-1 range 20 resp. ASME B16.10

Valve Automation

Pneumatic actuators and accessories

for easy, modular installation onto process control components such as Butterfly Valves, Cylindrical Plug Valves, Ball Valves, Sampling Ball Valves or as operating device applied on automated Reactor Sampling Systems.



SPA-R Quarter Turn Actuators

Die-cast aluminum, rack and pinion construction, double-acting DA or single-acting SR with spring return (fail safe open or closed)



Options

Visual position indicator
Limit switch box, solenoid valve
E/P positioner



SPA-L Linear Stroke Actuators

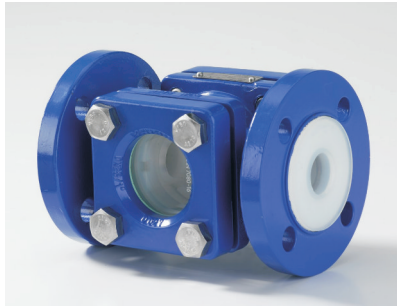
PP body, control diaphragm, pre-tensioned spring sets, double-acting DA or single-acting FC (fail safe closed)/FO (fail safe open)

**STATE OF THE SMART
FLUID HANDLING SYSTEMS**

Sight Glasses / Check Valves

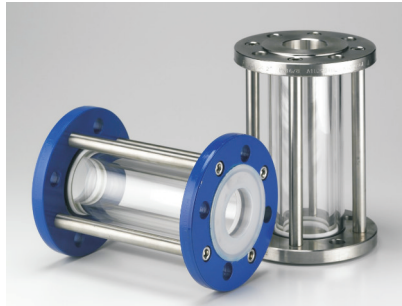
plastomer-lined or fully stainless steel

for permanent flow indication as well as safe non-return flow control of liquid process media. Flanges acc. to EN 1092-1 B1 and ASME B16.5 standards.



SSP Sight Glasses

Nom. Sizes: DN15 - DN150 resp. 1/2" - 6"
Flanges: DIN PN10/16 resp. ANSI 150lbs
F/F length: EN 558-1 range 1 resp. ASME B16.10



SSP-T / SST-T Tubular Sight Glasses

Nom. Sizes: DN15 - DN150 resp. 1/2" - 6"
Flanges: DIN PN10/16 resp. ANSI 150lbs
F/F length: EN 558-1 range 1 resp. ASME B16.10



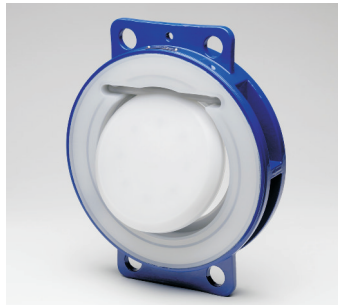
SST Stainless Steel Sight Glasses

Nom. Sizes: DN15 - DN100 resp. 1/2" - 4"
Flanges: DIN PN10/16 resp. ANSI 150lbs
F/F length: EN 558-1 range 1 resp. ASME B16.10



SBC Ball Check Valves

Nom. Sizes: DN15 - DN150 resp. 1/2" - 6"
Flanges: DIN PN10/16 resp. ANSI 150lbs
F/F length: EN 558-1 range 1 resp. ASME B16.10



SSC Swing Check Valves

Nom. Sizes: DN40 - DN600 resp. 1 1/2" - 24"
Flanges: DIN PN10/16 resp. ANSI 150lbs
F/F length: EN 558-1 range 20 resp. ASME B16.10

Inline Sampling Valves

plastomer-lined or fully stainless steel

for representative sampling of aggressive liquids out of pressurized pipelines or at vacuum conditions - without any process interruptions. Flanges acc. to EN 1092-1 B1 and ASME B16.5 standards.



SSV Sampling Valves full port

Nom. Sizes: DN15 - DN150 resp. 1/2" - 6"
Flanges: DIN PN10/16 resp. ANSI 150lbs
F/F length: EN 558-1 range 1/3 resp. ASME B16.10



SSV-B Sampling Ball Valves full port

Nom. Sizes: DN15 - DN150 resp. 1/2" - 6"
Flanges: DIN PN10/16 resp. ANSI 150lbs
F/F length: EN 558-1 range 1/3 resp. ASME B16.10



SIV Sampling Valves, Flanged/Wafer

Nom. Sizes: DN15 - DN150 resp. 1/2" - 6"
Flanges: DIN PN10/16 resp. ANSI 150lbs
F/F length: EN 558-1 range 1/3 resp. ASME B16.10

Reactor Sampling Systems

plastomer-lined, manually operated or with diaphragm pump
for the safe, representative and closed sampling of liquid media out of reactors and vessels - quick and reliable, without any process interruptions.



SRS-P Reactor Sampling System, manually
Sampling via Sampling Valve Wafer/adaptor 90° into lab bottle, incl. gas return piping.



SRS-P-P Reactor Sampling System, with diaphragm pump
Sampling by means of forced circulation via Sampling Valve Flanged/adaptor into lab bottle.

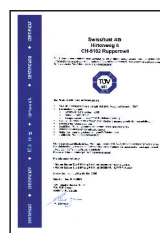
Quality / Conformity



ISO 9001:2008
Management system certified
by notified body of TÜV SÜD



PED (97/23/EC)
Conformity for
pressure equipment



TA-Luft
TÜV-appr. valves
acc. to VDI 2440

Our quality management system is supporting us to perform business activities with customers as well as global suppliers in full accordance with given requirements.

CE-Conformity means:
Supply of products with marking acc. to EN 19, CE declarations of conformity, inspection certificates acc. to EN 10204-3.1 for valves and components, operating manuals and spare parts lists.

CE 0036

Authorization for the scope of design, manufacture and sale of industrial valves acc. to
Pressure Equipment Directive 97/23/EC Annex III, Module H (Categories I - III)

Swissfluid AG
Industriestrasse 40
CH-5600 Lenzburg/Switzerland

Phone: +41 (0)62 889 20 10
Fax: +41 (0)62 889 20 11
info@swissfluid.ch www.swissfluid.ch

Swissfluid (USA), Inc.
12763 Capricorn Drive, Suite #100
Stafford, TX 77477 USA

Phone: +1 281 565 0097
Fax: +1 281 565 0098
info@swissfluid.com www.swissfluid.com

Swissfluid (China) Co. Ltd
Room 2002, Haibo Tower, No. 101 Nanmatou Rd.
New Pudong District, 200125 Shanghai, China

Phone: +86 21 6108 9963
Fax: +86 21 5168 5162
info@swissfluid.cn www.swissfluid.cn