

94VLF-A series

press end ball valve
lead free



Job Name:	
Job Location:	
Engineer:	
Contractor:	
Tag:	
PO#:	
Rep:	
Wholesale Dist.:	

DESCRIPTION

The Aalberts integrated piping systems International™ 94VLF-A Series Lead Free* Two-Piece Press Ball Valve is ideal for installation in most plumbing and heating systems, including potable water.

FEATURES

- Lead Free*, ANSI 3rd Party Certified
- Full-Port Flow
- PTFE Seats and Packing
- Adjustable Stem Packing
- Leak Before Press® Feature
- Corrosion Resistant Materials
- 100% Factory Tested
- 2 Year Warranty

APPROVALS

- MSS SP-110 Ball Valves
- IAPMO/ANSI Z1157 Ball Valves
- IAPMO PS-117 Press Connections
- NSF/ANSI/CAN 61 Water Quality
- NSF/ANSI/CAN 372 Lead Free

PERFORMANCE RATING

- Maximum Operating Pressure: 250 psig
- Temperature Range: 0°F - 250°F

APPROVED APPLICATIONS

- Water Including Potable Water
- Hydronic Heating (90% Glycol Max)
- Not Suitable for Flammable Gas Service
- Designed for Direct Mechanical Connection to ASTM B88-Type K, L, and M Copper Tubing in the Hard Drawn Condition
- Not Compatible with Soft Annealed Copper Tubing

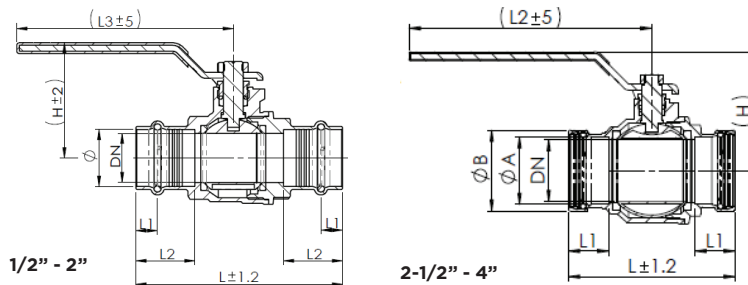
STANDARD MATERIALS LIST

BODY	Lead Free Brass (DZR)
RETAINER	Lead Free Brass (DZR)
BALL	Lead Free Brass (DZR)
STEM	Lead Free Brass (DZR)
GLAND NUT	Std. Rod Brass
WASHER	PTFE
SEATS	PTFE
STEM PACKING	PTFE
HANDLE	Plated Steel / Insulated Polyvinyl
STEM NUT	Steel, Plated
SEALING ELEMENT	EPDM

DIMENSIONS

MODEL NUMBER	SIZE (IN.)	DIMENSIONS (IN.) (MM)									2-1/4" STEM EXTENSION KIT
		DN	Ø	A	B	L	L1	L2	L3	H	
94VLF-103-01A	1/2"	15	0.63 (16.1)	-	-	3.41 (86.6)	0.43 (11)	1.1 (28)	3.82 (97)	1.66 (42.2)	78266101
94VLF-104-01A	3/4"	20	0.86 (22.5)	-	-	3.85 (97.9)	0.43 (11)	1.18 (30)	3.82 (97)	1.92 (48.7)	78266201
94VLF-105-01A	1"	25	1.13 (28.8)	-	-	4.13 (105)	0.43 (11)	1.18 (30)	4.41 (112)	2.3 (58.5)	78266301
94VLF-106-01A	1-1/4"	32	1.39 (35.2)	-	-	4.59 (116.5)	0.43 (11)	1.18 (30)	5.2 (132)	2.73 (69.3)	78266401
94VLF-107-01A	1-1/2"	40	1.63 (41.5)	-	-	5.16 (131.1)	0.51 (13)	1.38 (35)	5.2 (132)	2.93 (74.5)	78266501
94VLF-108-01A	2"	50	2.13 (54.2)	-	-	6.00 (152.5)	0.63 (16)	1.57 (40)	6.44 (163.5)	3.46 (88)	78266601
94VLF-109-01A	2-1/2"	65	-	2.64 (67)	3.15 (80)	6.5 (165)	1.57 (40)	9.45 (240)	-	4.61 (117)	78266701
94VLF-100-01A	3"	80	-	3.13 (79.6)	3.66 (93)	7.38 (187.5)	1.77 (45)	9.45 (240)	-	4.96 (126)	78266801
94VLF-10A-01A	4"	90	-	4.14 (105.1)	4.69 (119)	9.21 (234)	2.13 (54)	9.45 (240)	-	5.91 (150)	78266901

* 3 tolerances shown apply only to mm, not inches



*LEAD FREE: The wetted surfaces of this product shall contain no more than 0.25% lead by weighted average. Complies with Federal Public Law 111-380. ANSI 3rd party approved and listed.