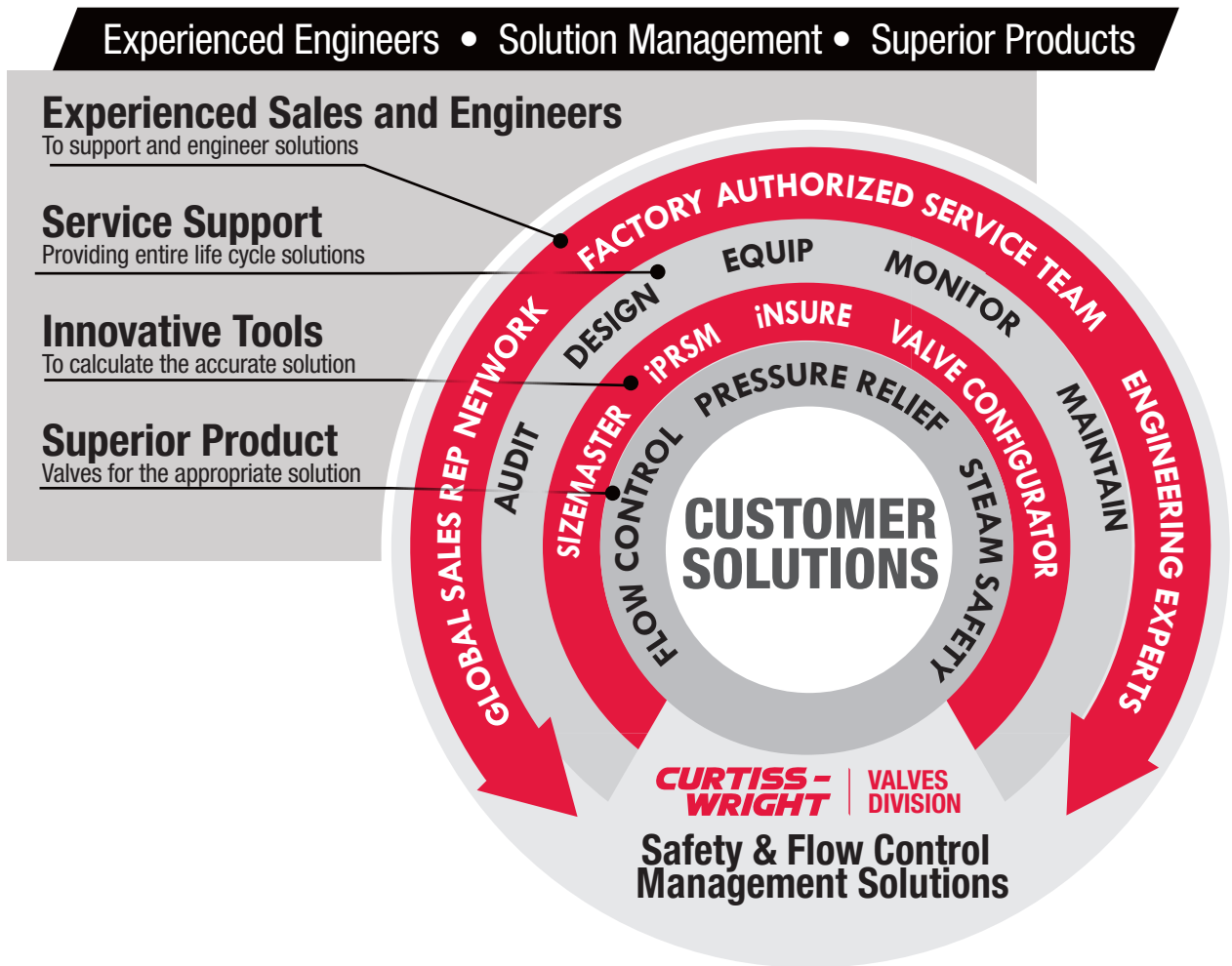




Safety and Flow Control Management Solutions

Focused On Customer Solutions

Our Commitment: Provide customers with total pressure and flow control management solutions transforming and ensuring plant function and safety.



Factory Authorized Service Team and Sales Representative Network

- Factory trained technicians in OEM specifications
- Local service and in-line testing reducing maintenance cost.
- Capability to track and manage relief valve maintenance and repair history
- Access to sales network, and keeping global inventory local



<https://www.cw-valvegroup.com/en-gb/contact-us>

Solutions Management and Innovative Tools

VALVE SIZING AND SELECTION SOFTWARE



Control Valve CONFIGURATOR

- Provides sizing for vapor, liquid, steam and two-phase flow
- Capable of multi scenario sizing. Multi-valve algorithm to easily size from multiple valves
- Built-in catalog selector ensures the proper product appropriate based on pressure and temperature
- Compliant with ASME and API
- Capable of multi scenario sizing. Multi-valve algorithm to easily size from multiple valves
- Develop, dimensional drawings
- Maintain project data
- Generate orders to be sent direct to production

SYSTEM MANAGEMENT SOFTWARE



Software Capabilities

- Overpressure analysis with relief load calculations
- Inlet and outlet piping hydraulic calculations
- Header blowdown and knockout drum calculations
- Acoustic induced vibration analysis



TRAINING



We offer technical training courses learning about valve management and industry scenarios.

SOME AVAILABLE CLASSES

- Pressure relief valve functionality
- Sizing requirements
- Material selection
- Sizing software training
- Maintenance and repair
- Mitigating overpressure scenarios

CONTACT: Your Sales Rep For More Information

PRESSURE RELIEF

2600, 2700, 3800



2600/2600L Series

Versatile and Customizable Spring Loaded Pressure Relief Valve

Product Description		
Pressure Range:	15 PSIG to 10,000 PSIG	(1.03 to 689) BARG
Temperature Range:	-450°F to +1500°F	-267.8°C to 815.6°C
Size Range:	1" x 2" to 20" x 24"	25 x 51 mm to 508 x 610 mm
Materials:	Carbon Steel, Stainless Steel, Monel, and Hastelloy C	
ASME Certification:	UV and V	
Service:	Steam/Water/Air	



2700 Series

Customizable Spring Loaded Pressure Relief Valve with a Compact Design

Product Description		
Pressure Range:	15 PSIG to 16,000 PSIG	(1.03 to 1103) BARG
Temperature Range:	-450°F to +750°F	-267.8°C to 398.9°C
Size Range:	1/2" x 1" to 1-1/2" x 2-1/2"	13 x 25.4 mm to 38 x 63.5 mm
Materials:	Carbon Steel, Stainless Steel, Monel, and Hastelloy C	
ASME Certification:	UV	
Service:	Steam/Water/Air	



3800/3800L Series

Pilot Operated Relief Valve with Snap Acting or Modulating Control

Product Description		
Pressure Range:	15 PSIG to 10,000 PSIG	(1.03 to 689) BARG
Temperature Range:	-450°F to +500°F	-267.8°C to 260°C
Size Range:	1" x 2" to 12" x 16"	25 x 51mm to 305 x 406 mm
Materials:	Carbon Steel, Stainless Steel, Monel, and Hastelloy C	
ASME Certification:	UV	
Service:	Steam/Water/Air	

2400 Series

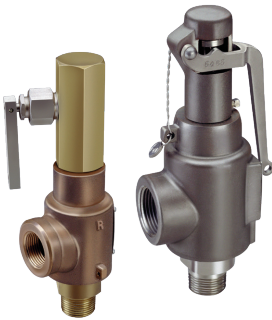
High Performance Direct Spring Loaded Pressure Relief Valve



Product Description		
Pressure Range:	20 PSIG to 2,000 PSIG	(1.37 to 137.8) BARG
Temperature Range:	-450°F to +550°F	-267.8°C to 287.8°C
Size Range:	1/2" x 3/4" to 1" x 1"	13 x 19 mm to 25 x 25 mm
Materials:	Carbon Steel, Stainless Steel, and Brass/Bronze	
ASME Certification:	UV	
Service:	Air	

1890/1896 Series

Low Pressure Spring Loaded Pressure Relief Valves



Product Description		
Pressure Range:	15 PSIG to 800PSIG	(1.03 to 55.1) BARG
Temperature Range:	-20°F to +750°F	-28.4°C to 398.8°C
Size Range:	1/2" x 3/4" to 3/4" x 1"	13 x 19 mm to 19 x 25 mm
Materials:	Carbon Steel, Stainless Steel, and Brass/Bronze	
ASME Certification:	UV	
Service:	Steam/Water/Air	

4200 Series

Spring Loaded Pressure Relief Valve for Section I Steam Applications



Product Description		
Pressure Range:	15 PSIG to 1,480 PSIG	(1.03 to 102) BARG
Temperature Range:	-20°F to +1000°F	-28.9°C to 537.8°C
Size Range:	1-1/4" x 1-1/2" to 6" x 8"	32 x 38 mm to 152 x 203 mm
Materials:	Carbon Steel, Stainless Steel, and Chrome-Moly	
ASME Certification:	UV and V	
Service:	Steam/Air	

6400 Series

Spring Loaded Pressure Relief Valve For Section I Steam Applications



Product Description		
Pressure Range:	15 PSIG to 2,900 PSIG	(1.03 to 200) BARG
Temperature Range:	-20°F to +1000°F	-28.9°C to 537.8°C
Size Range:	1" x 2" to 4" x 6"	25 x 51 mm to 102 x 152 mm
Materials:	Carbon Steel, Stainless Steel, and Chrome-Moly	
ASME Certification:	UV and V	
Service:	Steam/Air	

CONTROL VALVES

Sliding Stem and Rotary



300 Series

Sliding Stem Control Valves - Models 320 / 360 / 370 / 380 / 390

Product Description		
Size Range:	1/2" to 16" NPS	(15mm to 400mm DN)
Temperature Range:	-325°F to +1000°F	(-198°C to +538°C)
Pressure Range:	ASME B16.34 Class 150 to 2500	
Shutoff Range:	ANSI/FCI 70.2 and IEC 60534-4 Class II to VI	
End Connections:	RF • RTJ • BWE • SWE • FNPT	
Body Styles:	Globe and Angle	
Plug Types:	Balanced and Unbalanced	
Characteristics:	Equal Percentage • Linear • Quick Opening	



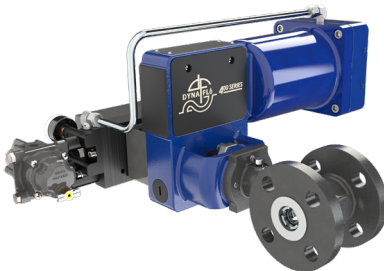
500 Series

Rotary Control Valves - Models 570 / 571 / 573 / 590

Product Description		
Size Range:	1" to 16" NPS	(25mm to 400mm DN)
Temperature Range:	-50°F to +800°F	(-46°C to +427°C)
Pressure Range:	ASME B16.34 Class 150 to 900	
Shutoff Range:	ANSI/FCI 70.2 and IEC 60534-4 Class II • IV • VI	
Body Styles:	Wafer and Flanged	
Characteristics:	Modified Equal Percentage	

400 Series

Eccentric Rotary Plug Control Valves - Model DF400



Product Description		
Size Range:	1" to 6" NPS	(25mm to 150mm DN)
Temperature Range:	-320°F to +750°F	(-196°C to +399°C)
Pressure Range:	ASME B16.34 Class 150 to 300	
Shutoff Range:	ANSI/FCI 70.2 and IEC 60534-4 Class II to VI	
Body Styles:	Flanged	
Characteristics:	Linear	
Actuator Options:	Exclusive Integral Actuator	

Linear and Rotary Valves

CONTROL VALVES



Integral Sliding Stem Valve and Actuator

Models DF100 / DF234 / DF270 / DF2410

Product Description		
Body Size Range:	1" and 2" NPS	(25mm and 50mm DN)
Port Size Range:	1/4" to 1-1/4"	(6.4mm to 38.1mm)
Temperature Range:	-50°F to +300°F	(-46°C to +150°C)
Pressure Range:	ASME B16.34 Class 150 to 1500	
Shutoff Range:	ANSI/FCI 70.2 and IEC 60534-4 Class IV	
End Connections:	RF • RTJ • FNPT	
Plug Types:	Unbalanced	

Actuators

Pneumatic Linear / Pneumatic Rotary



Product Description		
Temperature Range:	-40°F to +180°F	(-40°C to +82°C)
Pneumatic Linear Spring and Diaphragm - Model DFC / DFO		
DFC Input Signals:	0-18 • 0-33 PSIG	(0-1.24 • 0-2.28 BARG)
DFO Input Signals:	3-15 • 6-30 PSIG	(0.21-1.03 • 0.41-2.07 BARG)
Yoke Sizes:	2-1/8" • 2-13/16" • 3-9/16"	(54mm • 71mm • 90mm)
Travel Range:	3/8" to 4"	(9.5mm to 102mm)
Valve Stem Compatibility:	3/8" • 1/2" • 3/4"	(9.5mm • 12.7mm • 19.1mm)
Pneumatic Linear Piston - Model DFLP		
Operating Pressures:	20 PSIG to 150 PSIG	(1.38 BARG to 10.3 BARG)
Yoke Sizes:	3-9/16" • 5"	(91mm • 127mm)
Travel Range:	3/4" to 8-1/8"	(19.1mm to 206mm)
Valve Stem Compatibility:	3/4" • 1" • 1-1/4"	(19.1mm • 25.4mm • 31.8mm)
Pneumatic Rotary Spring and Diaphragm - Model DFR		
Input Signal:	0-18 • 0-33 • 3-27 PSIG	(0-1.24 • 0-2.28 • 0.21-1.86 BARG)
Valve Shaft Compatibility:	1/2" to 2"	(12.7mm to 50.8mm)
Pneumatic Rotary Piston - Model DFRP		
Operating Pressures:	20 PSIG to 150 PSIG	(1.38 BARG to 10.3 BARG)
Valve Shaft Compatibility:	1/2" to 2-1/2"	(12.7mm to 63.5mm)



Warranty

All Products have a Warranty Period of twelve months from first installation or eighteen months from delivery, whichever is sooner. All other warranty terms are as per Curtiss-Wright Industrial Standard Terms and Conditions, a copy which is available at www.cw-industrialgroup.com/About/Group-Policies/Terms-Conditions.aspx or contact your local representative.

Curtiss-Wright Corporation (NYSE: CW) has a long history with its roots dating back to Orville and Wilbur Wright's first flight in 1903, and Mr. Glenn Curtiss, the father of naval aviation. In 1929, the companies founded by these three great aviation pioneers, the Curtiss Aeroplane and Motor Company and Wright Aeronautical Corporation, merged to form the largest aircraft company at the time, Curtiss-Wright Corporation.

We have continued on the path of innovation and advanced engineering, and have applied that expertise to a number of critical applications in high-performance markets. Our success has resulted in a world-renowned reputation for performance, long-standing customer relationships and significant growth.

Today, we are a global, integrated provider of highly engineered, technologically advanced products and services. Our revenues are generated by providing our critical solutions through three segments: Aerospace & Industrial, Defense Electronics and Naval & Power, which support several of the largest, most vital industries in the world.



Curtiss-Wright, Valves Division

Headquarters: 10195 Brecksville Road, Brecksville, OH 44141 USA • Telephone: 440-838-7690 • www.cw-valvegroup.com/farris

Offices Worldwide: For a listing of our global sales network, visit our website at www.cw-valvegroup.com/farrisdistributors.

While this information is presented in good faith and believed to be accurate, Curtiss-Wright Corporation, Valve Division does not guarantee satisfactory results from reliance on such information. Nothing contained herein is to be construed as a warranty or guarantee, expressed or implied, regarding the performance, merchantability, fitness or any other matter with respect to the products, nor as a recommendation to use any product or process in conflict with any patent. Curtiss-Wright Corporation, Farris Engineering reserves the right, without notice, to alter or improve the designs or specifications of the products described herein.